



CXCL1 Antibody

5G11-PU

E550010-

CATALOG #

E550010-5G11-PU

SOURCE

Purified mouse monoclonal antibody generated using *E.coli* expressed recombinant protein CXCL1 as immunogen.

ANTIGEN

Recombinant protein corresponding to fragment (aa/36-107) CXCL1 .

NCBI KEY

CXCL1 [GeneID: 2919; Nucleotide: NM_001511.1; Protein: NP_001502.1]

CLASS

Mouse IgG₁

SPECIFICITY

Anti-CXCL1 recognizes recombinant protein CXCL1.

APPLICATIONS

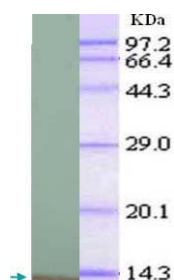
Anti-CXCL1 can be used in **ELISA** and **WB-Re**.

PRODUCT

Each vial contains 100 µg IgG in 100 µl of citrate-tris-HCl buffer pH7.0 with 0.02% Proclin 300.

STORAGE

The antibody may be stored at -20°C for one year in its original formulation. Additionally, antibody may be stored at 2°C to 8°C for up to 1 month without detectable loss of activity. **Avoid repeated freeze-thaw cycles of the diluted antibody.**

DATA

WB (1:1000) analysis of recombinant protein CXCL1 with Anti-CXCL1 (E550010-5G11-PU).

For Research Use Only