



## CXCL10 Antibody

-1-PU

E550009

**CATALOG #**

E550009-1-PU

**SOURCE**

Purified mouse monoclonal antibody generated using *E.coli* expressed recombinant protein CXCL10 as immunogen.

**ANTIGEN**

Recombinant protein corresponding to full length CXCL10 .

**NCBI KEY**

CXCL10 [GeneID: 3627; Nucleotide: NM\_001565.2; Protein: NP\_001556.2]

**CLASS**

Mouse IgG<sub>2b</sub>

**SPECIFICITY**

Anti-CXCL10 recognizes recombinant protein CXCL10.

**APPLICATIONS**

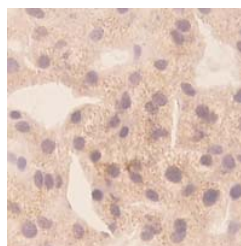
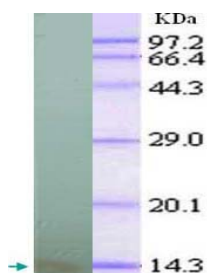
Anti-CXCL10 can be used in **ELISA**, **WB-Re** and **IHC**.

**PRODUCT**

Each vial contains 100 µg IgG in 100 µl of citrate-tris-HCl buffer pH7.0 with 0.02% Proclin 300.

**STORAGE**

The antibody may be stored at -20°C for one year in its original formulation. Additionally, antibody may be stored at 2°C to 8°C for up to 1 month without detectable loss of activity. **Avoid repeated freeze-thaw cycles of the diluted antibody.**

**DATA**

WB (1:1000) analysis of recombinant protein CXCL10 with Anti-CXCL10 (E550009-1-PU).

IHC (1:10) to human liver tissue

**For Research Use Only**