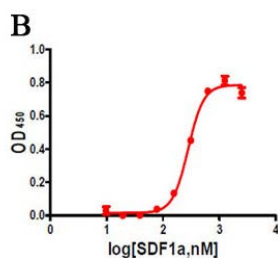




Recombinant Human SDF-1 α protein

E13-004

Catalog Number:	E13-004-1, E13-004-2
Amount:	10 μ g, 50 μ g
Product description:	Human SDF-1 α produced in E. coli is non-glycosylated polypeptide chain containing 70 amino acids (3-70 a.a; predicted MW=8.1kDa.). The recombinant rotein was purified by cation exchange chromatography and gel filtration chromatography. Purity is greater than 98% by SDS-PAGE and Coomassie blue staining (Figure A). The protein was active in ELISA assay with an EC50 of about 280nM (Figure B).
Background:	SDF-1 (stromal cell-derived factor-1), also called CXCL12, is small cytokine belonging to the chemokine family. The two forms, SDF-1 α /CXCL12a and SDF-1 β /CXCL12b, are produced in cells by alternate splicing of the same gene. SDF-1 signal through its receptor CXCR4, and have been shown to chemoattract B and T cells, induce migration of CD34+ stem cells. Additionally, SDF-1 and its receptor CXCR4 are involved in human disease states (e.g. HIV/AIDS) and cancer metastasis.
GenBank accession number:	NP_954637
Amino acid sequence:	MGKPVLSYRCP RFFESHVARANVKHLKILNTPNCALQIVARLKNNNRQVCIDPKLKWIQEY LEKALNK
Activity:	ELISA to measure SDF-1 α binding activity (Figure B). SDF-1 α was immobilized on the plate and was detected by anti SDF-1 α antibody (Santacruz sc-6193).
Formulation:	Lyophilized from a 0.22 μ m filtered solution at a concentration of 1mg/ml in PBS.
Reconstitution:	We recommend that this vial be briefly centrifuged prior to opening to bring the contents to the bottom. Reconstitute in sterile distilled water to a concentration of 1.0 mg/ml.
Shipping&Stability:	The Product is shipped at ambient temperature. Upon reconstitution, the preparation is stable for up to 1 month at 2-8 $^{\circ}$ C. For long term storage, apportion the reconstituted preparation into working aliquots and store at -20 $^{\circ}$ C to -70 $^{\circ}$ C. Avoid repeated freeze/thaw cycles.



FigureA. The purity of recombinant protein SDF-1 α (E13-004). 12% SDS-PAGE, 1.2 μ g protein without (lane 1) and with (lane 2) DTT.

FigureB. ELISA to measure the activity of SDF-1 α (E13-004)

For Research Use Only