



GAPDH Rabbit Polyclonal Antibody(Zebrafish Specific)

E12-141

Catalog Number: E12-141

Amount: 100µg/100µl

Background: Glyceraldehyde 3 phosphate dehydrogenase (GAPDH) is well known as one of the key enzymes involved in glycolysis. GAPDH is constitutively expressed in almost all tissues at high levels, therefore antibodies against GAPDH are useful as loading controls for Western Blotting. Some physiological factors, such as hypoxia and diabetes, increase GAPDH expression in certain cell types.

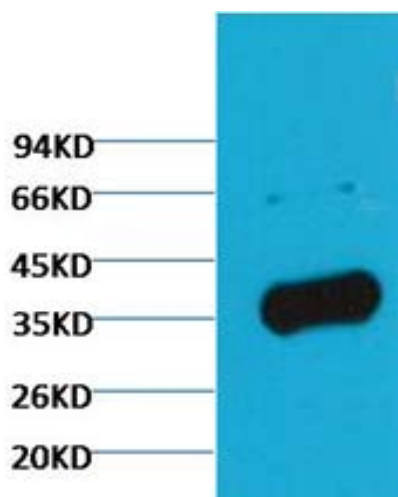
Form of Antibody: IgG1 in phosphate buffered saline (without Mg²⁺ and Ca²⁺), pH 7.4, 150mM NaCl, 0.02% sodium azide and 50% glycerol.

Storage/Stability: Store at -20°C/1 year. Do not aliquot the antibody.

Specificity/Sensitivity: The GAPDH antibody can detects Zebrafish endogenous GAPDH protein.

Reactivity: Zebrafish

Applications: WB: 1:5,000-10,000 IHC: 1:200 IF: 1:200



Western blot analysis of Zebrafish skeletal muscle with GAPDH Rabbit pAb(Zebrafish Specific) diluted at 1:5,000.

For Research Use Only