



## $\beta$ I tubulin Mouse Monoclonal Antibody

E12-050

**Catalog Number:** E12-050

**Amount:** 100 $\mu$ g/100 $\mu$ l

**Clone Number:** 3F7

**Background:** Tubulin is one of several members of a small family of globular proteins. The tubulin superfamily includes five distinct families, the alpha-, beta-, gamma-, delta-, and epsilon-tubulins. The most common members of the tubulin family are  $\alpha$ -tubulin and  $\beta$ -tubulin, the proteins that make up microtubules. Each has a molecular weight of approximately 55 KD. Microtubules are assembled from dimers of  $\alpha$ - and  $\beta$ -tubulin.

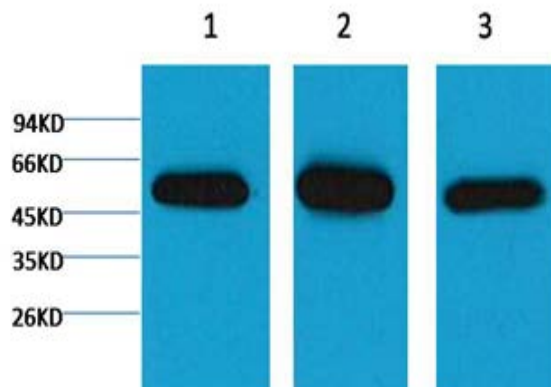
**Form of Antibody:** Mouse IgG1 in phosphate buffered saline (without Mg<sup>2+</sup> and Ca<sup>2+</sup>), pH 7.4, 150mM NaCl, 0.02% sodium azide and 50% glycerol.

**Storage/Stability:** Store at -20°C/1 year. Do not aliquot the antibody.

**Specificity/Sensitivity:** The  $\beta$  I tubulin antibody can recognize endogenous  $\beta$  I tubulin proteins.

**Reactivity:** H, R, M

**Applications:** WB: 1:5,000-10,000



Western blot analysis of 1) HeLa, 2) Mouse Brain Tissue, 3) Rat Brain Tissue with E12-050 diluted at 1:5,000.

**For Research Use Only**