



α -tubulin Mouse Monoclonal Antibody

E12-048

Catalog Number: E12-048

Amount: 100 μ g/100 μ l

Clone Number: 8F11

Background: Tubulin is one of several members of a small family of globular proteins. The tubulin superfamily includes five distinct families, the alpha-, beta-, gamma-, delta-, and epsilon-tubulins. The most common members of the tubulin family are α -tubulin and β -tubulin, the proteins that make up microtubules. Each has a molecular weight of approximately 55 KD. Microtubules are assembled from dimers of α - and β -tubulin

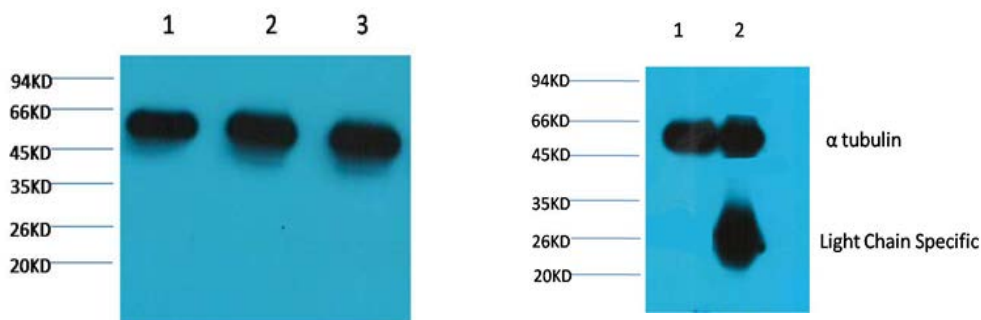
Form of Antibody: Mouse IgG1 in phosphate buffered saline (without Mg²⁺ and Ca²⁺), pH 7.4, 150mM NaCl, 0.02% sodium azide and 50% glycerol.

Storage/Stability: Store at -20°C/1 year. Do not aliquot the antibody.

Specificity/Sensitivity: The α -tubulin antibody can detect endogenous α -tubulin protein

Reactivity: H, R, M

Applications: WB: 1:5,000-10,000 IP:1:200 IF: 1:100-200



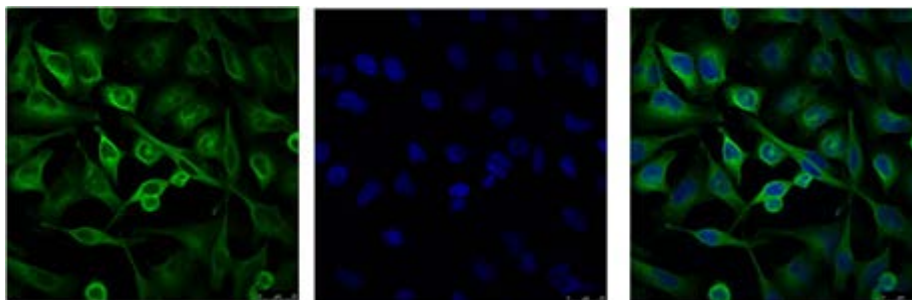
Western blot analysis of 1) HeLa, 2) Rat Brain Tissue, 3) Mouse Brain Tissue with E12-048 diluted at 1:5,000.

1、Input: Mouse Brain Tissue Lysate

2、IP product: IP dilute 1:200

Western blot analysis: primary antibody : E12-048

1:5,000 Secondary antibody: Goat anti-Mouse IgG, Light chain specific (S003), 1:5,000



For Research Use Only