



## CD28 (Phospho-Tyr218) Antibody

E11-0845A

**Catalog Number:** E11-0845A

**Concentration:** 1mg/ml

**Swiss-Prot No.:** P10747

**Other Names:** T-cell-specific surface glycoprotein CD28 precursor, TP44

**All Sites:** Human: Tyr218; Mouse: Tyr216

**Storage/Stability:** Store at -20 °C/1 year

**Form of Antibody:** Rabbit IgG in phosphate buffered saline (without Mg<sup>2+</sup> and Ca<sup>2+</sup>), pH 7.4, 150mM NaCl, 0.02% sodium azide and 50% glycerol.

**Immunogen:** The antiserum was produced against synthesized phosphopeptide derived from human CD28 around the phosphorylation site of tyrosine 218 (A-A-Y<sup>P</sup>-R-S).

**Purification:** The antibody was affinity-purified from

rabbit antiserum by affinity-chromatography using epitope-specific phosphopeptide. The antibody against non-phosphopeptide was removed by chromatography using non-phosphopeptide corresponding to the phosphorylation site.

**Specificity:** CD28 (Phospho-Tyr218) antibody detects endogenous levels of CD28 only when phosphorylated at tyrosine 218.

**Reactivity:** Human, Mouse

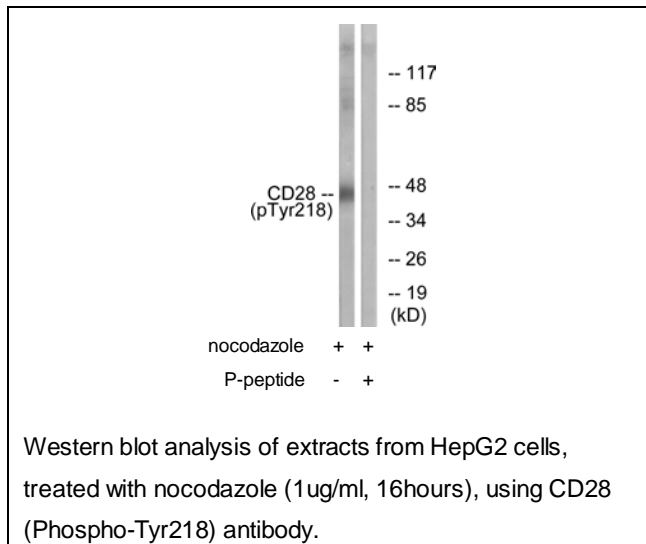
**Applications:** WB: 1:500~1:1000 ELISA: 1:40000

**References:**

Aruffo A., Proc. Natl. Acad. Sci. U.S.A. 84:8573-8577(1987).

Lee K.P., J. Immunol. 145:344-352(1990).

Deshpande M., Hum. Immunol. 63:20-23(2002).



**For Research Use Only**