



## PTEN (Phospho-Ser380/Thr382/Thr383) Antibody

E011056

**Catalog Number:** E011056-1, E011056-2

**Amount:** 50µg/50µl, 100µg/100µl

**Form of Antibody:** Rabbit IgG in phosphate buffered saline (without Mg<sup>2+</sup> and Ca<sup>2+</sup>), pH 7.4, 150mM NaCl, 0.02% sodium azide and 50% glycerol.

**Storage/Stability:** Store at -20 °C year

**Immunogen:** The antiserum was produced against synthesized phosphopeptide derived from human PTEN around the phosphorylation site of serine 380 and threonine 382/383 (R-Y-S<sup>P</sup>-D-T<sup>P</sup>-T<sup>P</sup>-D-S).

**Purification:** The antibody was affinity-purified from rabbit antiserum by affinity-chromatography using epitope-specific phosphopeptide. The antibody against non-phosphopeptide was removed by chromatography using non-phosphopeptide corresponding to the phosphorylation site.

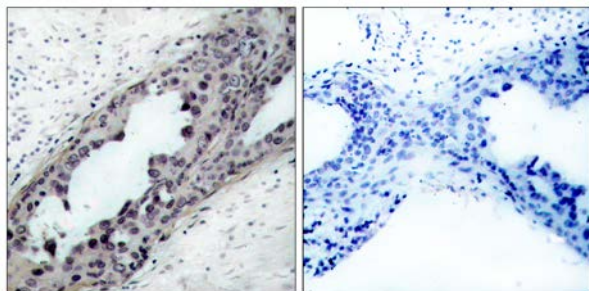
**Specificity/Sensitivity:** PTEN (phospho-Ser380/Thr382/Thr383) antibody detects endogenous levels of PTEN only when phosphorylated at serine 380 and threonine 382/383.

**Reactivity:** Human, Mouse, Rat

**Applications:** WB: 1:500~1:1000 IHC:1:50~100 IF:1:100~1:200

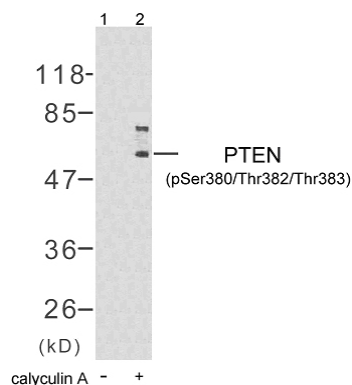
**Swiss-Prot No. :** P60484

**References:** Al-Khouri AM, et al. (2005) J Biol Chem. 280(42):35195-35202.  
Torres J, et al. (2001) J Biol Chem. 276(2): 993-998.  
Vazquez F, et al. (2000) Mol Cell Biol. 20(14): 5010-5018.



P-Peptide - +

Immunohistochemical analysis of paraffin- embedded human breast carcinoma tissue, using PTEN (phospho-Ser380/Thr382/Thr383) antibody (E011056).



Western blot analysis of extract from HT29 cells untreated or treated with calyculin A, using PTEN (phospho-Ser380/Thr382/Thr383) antibody (E011056).

**For Research Use Only**