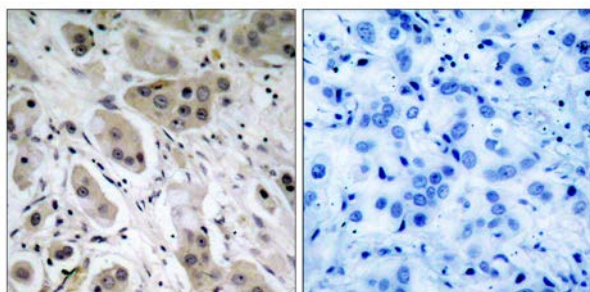




Akt (Phospho-Ser473) Antibody

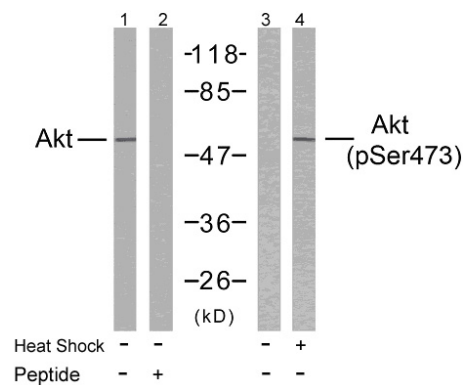
E011054

- Catalog Number:** E011054-1, E011054-2
- Amount:** 50µg/50µl, 100µg/100µl
- Form of Antibody:** Rabbit IgG in phosphate buffered saline (without Mg²⁺ and Ca²⁺), pH 7.4, 150mM NaCl, 0.02% sodium azide and 50% glycerol.
- Storage/Stability:** Store at -20°C/1 year
- Immunogen:** The antiserum was produced against synthesized phosphopeptide derived from human Akt around the phosphorylation site of serine 473 (Q-F-S^P-Y-S).
- Purification:** The antibody was affinity-purified from rabbit antiserum by affinity-chromatography using epitope-specific phosphopeptide. The antibody against non-phosphopeptide was removed by chromatography using non-phosphopeptide corresponding to the phosphorylation site.
- Specificity/Sensitivity:** Akt (phospho-Ser473) antibody detects endogenous levels of Akt only when phosphorylated at serine 473.
- Reactivity:** Human, Mouse, Rat
- Applications:** WB: 1:500~1:1000 IHC: 1:50~1:100
- Swiss-Prot No. :** P31749
- References:** Baudhuin LM, et al. (2004) FASEB J Feb; 18(2): 341-3.
Min YH, et al. (2004) Cancer Res; 64(15): 5225-31.
Feng J, et al. (2004) J Biol Chem; 279(34): 35510-7.



P-Peptide - +

Immunohistochemical analysis of paraffin- embedded human breast carcinoma tissue, using Akt (phospho-Ser473) antibody (E011054).



Western blot analysis of extract from HeLa cells untreated or treated with heat shock using Akt (Ab-473) antibody (E021054, Lane 1 and 2) and Akt (phospho-Ser473) antibody (E011054, Lane 3 and 4).

For Research Use Only