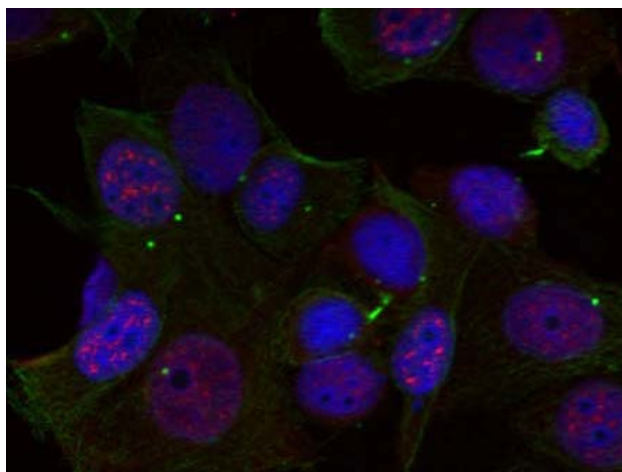




Rel (Phospho-Ser503) Antibody

E011020

- Catalog Number:** E011020-1, E011020-2
- Amount:** 50µg/50µl, 100µg/100µl
- Form of Antibody:** Rabbit IgG in phosphate buffered saline (without Mg²⁺ and Ca²⁺), pH 7.4, 150mM NaCl, 0.02% sodium azide and 50% glycerol.
- Storage/Stability:** Store at -20°C/1 year
- Immunogen:** The antiserum was produced against synthesized phosphopeptide derived from human Rel around the phosphorylation site of serine 503 (T-S-S^P-D-S).
- Purification:** The antibody was affinity-purified from rabbit antiserum by affinity-chromatography using epitope-specific phosphopeptide. The antibody against non-phosphopeptide was removed by chromatography using non-phosphopeptide corresponding to the phosphorylation site.
- Specificity/Sensitivity:** Rel (phospho-Ser503) antibody detects endogenous levels of Rel only when phosphorylated at serine 503.
- Reactivity:** Human
- Applications:** IF:1:100~1:200
- Swiss-Prot No. :** Q04864
- References:** Baeuerle, P.A. and Henkel, T. (1994) *Annu Rev Immunol* 12, 141-79.
Baeuerle, P.A. and Baltimore, D. (1996) *Cell* 87, 13-20
Haskill, S. et al. (1991) *Cell* 65, 1281-9.
Thompson, J.E. et al. (1995) *Cell* 80, 573-82.



Immunofluorescence staining of methanol-fixed HeLa cells using Rel (phospho-Ser503) antibody (E011020, Red).

For Research Use Only