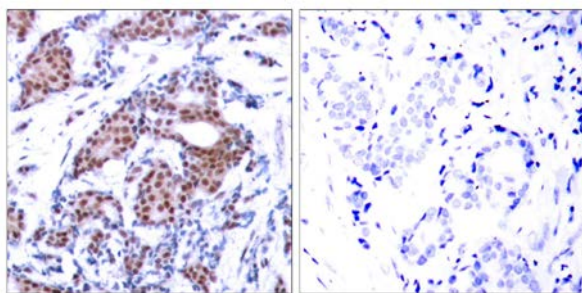




## Elk-1 (Phospho-Ser383) Antibody

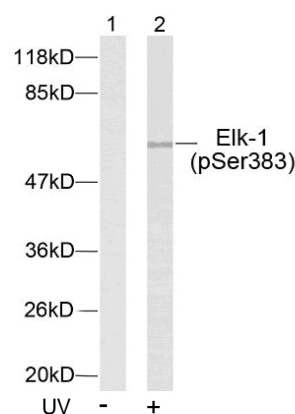
E011004

- Catalog Number:** E011004-1, E011004-2
- Amount:** 50µg/50µl, 100µg/100µl
- Form of Antibody:** Rabbit IgG in phosphate buffered saline (without Mg<sup>2+</sup> and Ca<sup>2+</sup>), pH 7.4, 150mM NaCl, 0.02% sodium azide and 50% glycerol.
- Storage/Stability:** Store at -20°C/1 year
- Immunogen:** The antiserum was produced against synthesized phosphopeptide derived from human Elk-1 around the phosphorylation site of serine 383 (T-L-S<sup>P</sup>-P-I).
- Purification:** The antibody was affinity-purified from rabbit antiserum by affinity-chromatography using epitope-specific phosphopeptide. The antibody against non-phosphopeptide was removed by chromatography using non-phosphopeptide corresponding to the phosphorylation site.
- Specificity/Sensitivity:** Elk-1 (phospho-Ser383) antibody detects endogenous levels of Elk-1 only when phosphorylated at serine 383.
- Reactivity:** Human, Mouse, Rat
- Applications:** WB: 1:500~1:1000 IHC: 1:50~1:100
- Swiss-Prot No. :** P19419
- References:** Xing J, et al. (1996) *Science*. 273(5277): 959-963.  
Janknecht R, et al. (1993) *EMBO J*. 12(13): 5097-5104.  
Marais R, et al. (1993) *Cell* 73: 381-393.  
Kortenjann M, et al. (1994) *Mol Cell Biol*. 14: 4815-4824.  
Cavigelli M, et al. (1995) *EMBO J*. 14: 5957-5964.



P-Peptide                      -                      +

Immunohistochemical analysis of paraffin-embedded human breast carcinoma tissue using Elk-1 (phospho-Ser383) antibody (E011004).



Western blot analysis of extract from HeLa cells untreated or treated with UV using Elk-1 (phospho-Ser383) antibody (E011004).

**For Research Use Only**