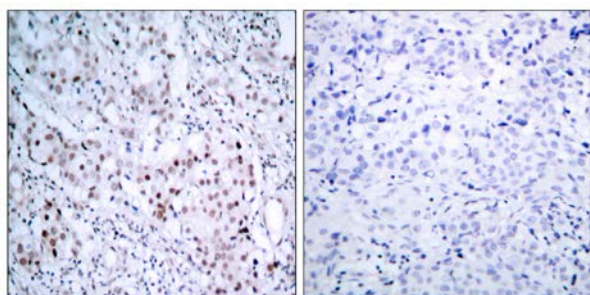




c-Jun (Phospho-Ser63) Antibody

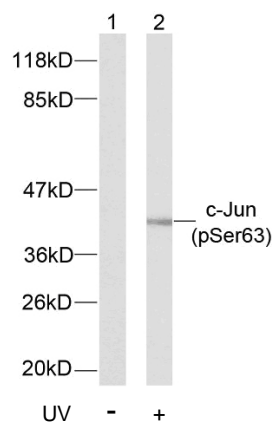
E011001

- Catalog Number:** E011001-1, E011001-2
Amount: 50µg/50µl, 100µg/100µl
Form of Antibody: Rabbit IgG in phosphate buffered saline (without Mg²⁺ and Ca²⁺), pH 7.4, 150mM NaCl, 0.02% sodium azide and 50% glycerol.
Storage/Stability: Store at -20°C/1 year
Immunogen: The antiserum was produced against synthesized phosphopeptide derived from human c-Jun around the phosphorylation site of serine 63 (L-T-S^P-P-D).
Purification: The antibody was affinity-purified from rabbit antiserum by affinity-chromatography using epitope-specific phosphopeptide. The antibody against non-phosphopeptide was removed by chromatography using non-phosphopeptide corresponding to the phosphorylation site.
Specificity/Sensitivity: c-Jun (phospho-Ser63) antibody detects endogenous levels of c-Jun only when phosphorylated at serine 63.
Reactivity: Human, Mouse
Applications: WB: 1:500~1:1000 IHC: 1:50~1:100
Swiss-Prot No. : P05412
References: Wei W, et al. (2005). *Cancer Cell*. 8(1): 25-33.
Sevilla A, et al. (2004). *Oncogene*.23 (55): 8950-8958.
Li L, et al. (2004). *J Biol Chem*.279 (6): 4058-4065.
Hurd C, et al. (2002). *Oncogene*.21 (14): 2154-2160.



P-Peptide - +

Immunohistochemical analysis of paraffin-embedded human breast carcinoma tissue using c-Jun (phospho-Ser63) antibody (E011001).



Western blot analysis of extracts from NIH/3T3 cells using c-Jun (phospho-Ser63) antibody (E011001)

For Research Use Only